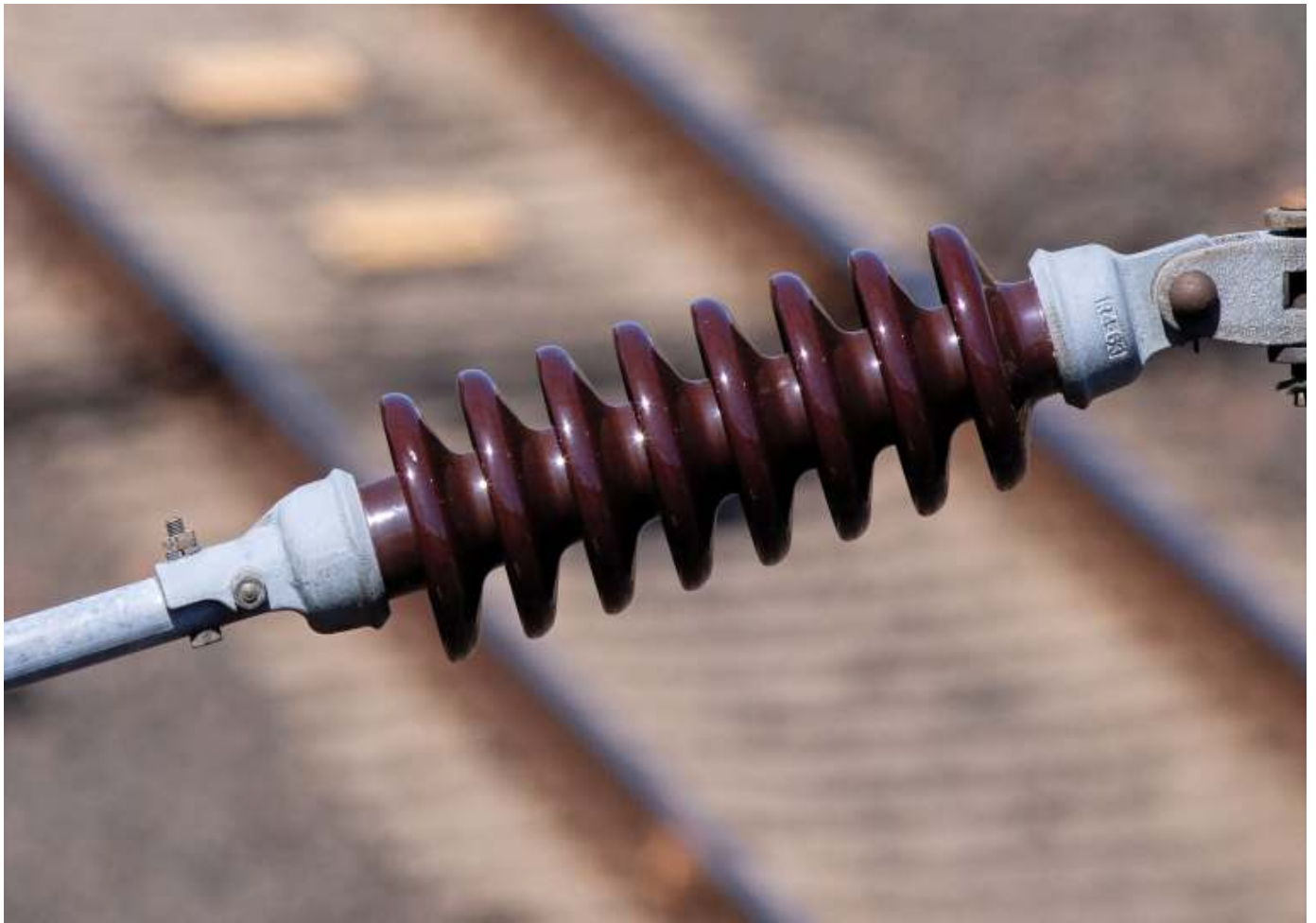
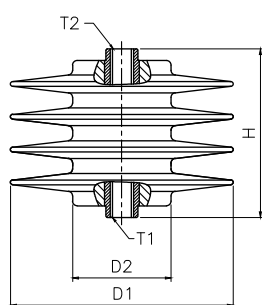


MASCASTS

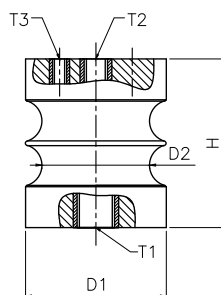
Products Catalogue



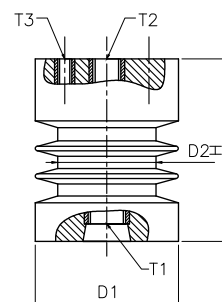
3.3 KV EPOXY INSULATORS



IN1112



IN1030



IN1001

DIMENSIONAL DATA

ITEM NAME	ITEM CODE	D1	D2	H	INSERT		INSERT		INSERT	
					T1	L1	T2	L2	T3	L3
SIGA 01	IN1001	61	45	75	M12	20	M10	10	M6	9
INSULATOR 60X55	IN1030	60	50	55	M10	15	M10	15	M6	9
LINK HHV	IN1112	91	40	72	M10	20	M10	20	-	-

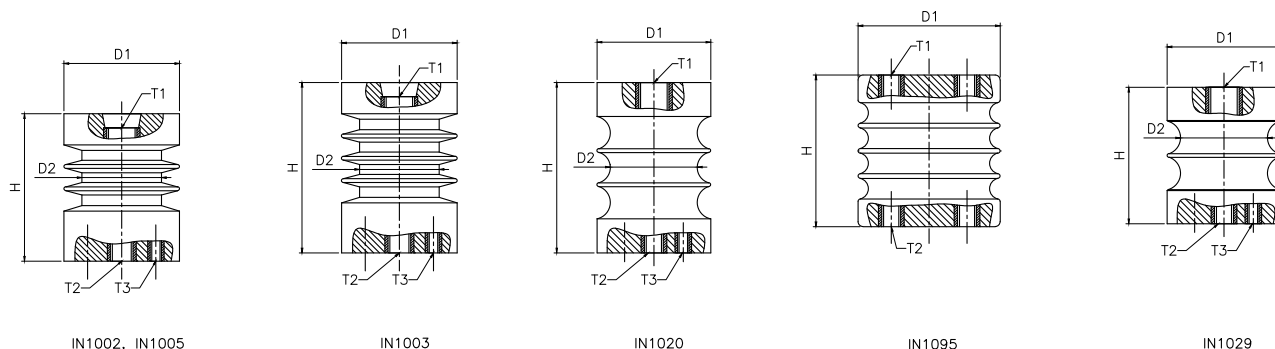
MECHANICAL CHARACTERISTICS

ITEM NAME	ITEM CODE	CREEPAGE	LOAD DISTANCE FROM THE FACE	CANTILIVER BREAKING LOAD	TENSILE WITHSTAND LOAD	COMPRESSION WITHSTAND LOAD
SIGA 01	IN1001	115	10	> 400	> 1000	> 4000
INSULATOR 60X55	IN1030	64	10	> 400	> 1000	> 4000
LINK HHV	IN1112	234	10	-	> 500	> 4500

ELECTRICAL CHARACTERISTICS

DRY POWER FREQUENCY WITHSTAND VOLTAGE		10 KV FOR 1 MINUTE
DRY FLASH OVER		> 28 KV
IMPULSE WITHSTAND VOLTAGE		45 KVP

6.6 KV EPOXY INSULATORS



DIMENSIONAL DATA

ITEM NAME	ITEM CODE	D1	D2	H	INSERT		INSERT		INSERT	
					T1	L1	T2	L2	T3	L3
SIGA 02	IN 1002	61	42	75	M12	20	M10	10	M6	9
SIGA 03	IN 1003	91	40	72	M10	20	M10	20	-	-
SIGB 03	IN 1005	72	55	95	M16	30	M16	30	M10	17
D- TYPE 028	IN 1020	95	60	90	M16	30	M16	30	M10	17
INSULATOR 90 X 80	IN 1029	95	78	80	M16	35	M10	17	M10	17
INSULATOR 069	IN 1032	100	80	90	M10	25	M10	25	M10	25
INSULATOR 90X110	IN 1094	90	64	110	M10	15	M10	15	-	-
INSULATOR 75X80	IN 1095	75	61	80	M10	16	M10	16	-	-

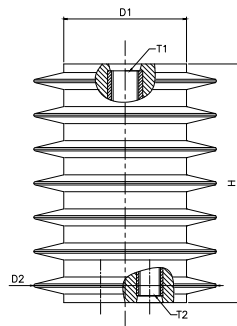
MECHANICAL CHARACTERISTICS

ITEM NAME	ITEM CODE	CREEPAGE	LOAD DISTANCE FROM THE FACE	CANTILIVER BREAKING LOAD	TENSILE WITHSTAND LOAD	COMPRESSION WITHSTAND LOAD
SIGA 02	IN 1002	130	10	> 400	> 1000	> 8000
SIGA 03	IN 1003	132	10	> 400	> 1000	> 8000
SIGB 03	IN 1005	120	30	> 1000	> 2000	> 10000
D- TYPE 028	IN 1020	107	10	> 500	> 1000	> 8000
INSULATOR 90 X 80	IN 1029	102	10	> 1000	> 2000	> 10000
INSULATOR 069	IN 1032	123	10	> 1000	> 2000	> 10000
INSULATOR 90X110	IN 1094	180	10	> 1000	> 2000	> 10000
INSULATOR 75X80	IN 1095	120	10	> 1000	> 2000	> 10000

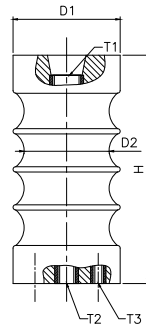
ELECTRICAL CHARACTERISTICS

DRY POWER FREQUENCY WITHSTAND VOLTAGE	20 KV FOR 1 MINUTE
DRY FLASH OVER	> 35 KV
IMPULSE WITHSTAND VOLTAGE	60 KVP

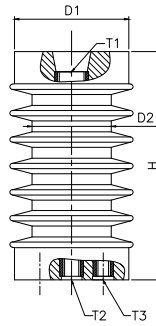
11 KV EPOXY INSULATORS



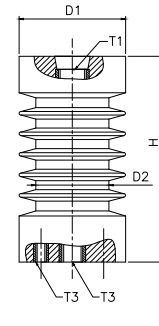
IN1021, IN1022, IN1023
IN1043,



IN1017, IN1018



IN1016



IN1004, IN1006, IN1010,
IN1011, IN1014, IN1015,
IN1026, IN1027, IN1028,
IN1108

DIMENSIONAL DATA

ITEM NAME	ITEM CODE	D1	D2	H	INSERT		INSERT		INSERT	
					T1	L1	T2	L2	T3	L3
SIGA 10	IN 1004	61	45	130	M16	32	M10	15	M6	9
SIGB 10	IN 1006	77	67	130	M20	36	M16	30	M10	16
SIGC 09	IN1010	91	73	130	M20	36	M16	30	M10	16
SIGC 10	IN 1011	95	76	130	M20	36	M16	30	M10	16
SIGK 09	IN 1014	56	42	130	M16	30	M10	16	M6	11
SIGK 10	IN 1015	68	52	130	M16	30	M10	16	M6	11
SIGM 10	IN 1016	66	46	130	M16	35	M8	15	M8	15
A-TYPE 009	IN 1017	65.5	48.5	130	M16	35	M10	22	M6	10
B-TYPE 004	IN 1018	77	58.5	130	M20	40	M16	40	M10	15
C-TYPE 023	IN 1019	95	78.5	130	M20	35	M16	32	M10	15
INSULATOR 72X130	IN1021	102	72	130	M20	32	M16	30	M10	15
INSULATOR 81X130	IN1022	115	84.5	130	M20	35	M16	35	M10	15
INSULATOR 132X150	IN1023	132	90	150	M20	30	M16	35	M16	35
ITEM -2	IN1026	79	61.5	130	M20	30	M16	32	M10	15
ITEM -3	IN1027	95	76	130	M20	30	M16	32	M10	15
ITEM -12	IN1028	120	86	130	M24	35	M16	40	-	-
INSULATOR 56X130	IN1034	65	42.5	130	M16	40	M10	32	-	-
A 11 INSULATOR	IN1035	70	53	150	M16	30	M12	25	-	-
A 12 INSULATOR	IN1036	75	58.5	130	M20	30	M16	32	-	-
INSULATOR 75/85 X 130	IN1043	85	60	130	M16	45	M10	25	M6	11
001 -5	IN1045	91	75	130	M20	35	M16	35	-	-
UZ	IN1046	91	58	130	M20	35	M16	35	-	-
VA	IN1047	110	75	130	M20	35	M16	35	-	-
RIGHT ENGG	IN1068	81	74.5	130	M20	30	M16	32	-	-
JC-02 125 X 150	IN1070	125	95	150	M20	39	M16	35	-	-
SIGA 12	IN1108	61	45	130	M16	32	M10	15	M6	9

next page...

11 KV EPOXY INSULATORS

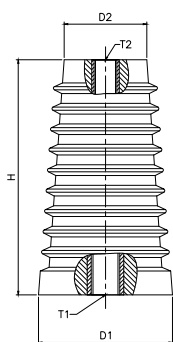
MECHANICAL CHARACTERISTICS

ITEM NAME	ITEM CODE	CREEPAGE	LOAD DISTANCE FROM THE FACE	CANTILIVER BREAKING LOAD	TENSILE WITHSTAND LOAD	COMPRESSION WITHSTAND LOAD
SIGA 10	IN 1004	180	30	>500	> 1000	> 10000
SIGB 10	IN 1006	190	40	>1000	> 2000	> 10000
SIGC 09	IN1010	177	30	>500	> 1000	> 10000
SIGC 10	IN 1011	203	50	> 1000	> 2000	> 10000
SIGK 09	IN 1014	187	30	> 500	> 2000	> 10000
SIGK 10	IN 1015	196	30	> 350	> 2000	> 10000
SIGM 10	IN 1016	248	30	> 500	> 2000	> 10000
A-TYPE 009	IN 1017	160	30	> 500	> 2000	> 10000
B-TYPE 004	IN 1018	152	40	> 1000	> 2000	> 10000
C-TYPE 023	IN 1019	152	50	> 1000	> 2000	> 10000
INSULATOR 72X130	IN1021	315	40	> 1000	> 2000	> 10000
INSULATOR 81X130	IN1022	315	40	> 1000	> 2000	> 10000
INSULATOR 132X150	IN1023	615	40	> 1600	> 2000	> 10000
ITEM -2	IN1026	222	40	> 1000	> 2000	> 10000
ITEM -3	IN1027	232	50	> 1000	> 2000	> 10000
ITEM -12	IN1028	256	50	> 2000	> 2000	> 10000
INSULATOR 56X130	IN1034	175	30	> 400	> 2000	> 10000
A 11 INSULATOR	IN1035	186	40	> 1000	> 2000	> 10000
A 12 INSULATOR	IN1036	164	40	> 1000	> 2000	> 10000
INSULATOR 75/85 X 130	IN1043	187	40	> 1000	> 2000	> 10000
001 -5	IN1045	182	40	> 1000	> 2000	> 10000
UZ	IN1046	248	40	> 1000	> 2000	> 10000
VA	IN1047	240	40	> 1000	> 2000	> 10000
RIGHT ENGG	IN1068	252	40	> 1000	> 2000	> 10000
JC-02 125 X 150	IN1070	240	50	> 1600	> 2000	> 10000
SIGA 12	IN1108	235	30	> 500	> 2000	> 10000

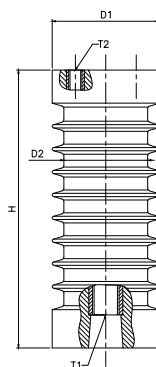
ELECTRICAL CHARACTERISTICS

DRY POWER FREQUENCY WITHSTAND VOLTAGE	35 KV FOR 1 MINUTE
DRY FLASH OVER	> 50 KV
IMPULSE WITHSTAND VOLTAGE	75 KVP

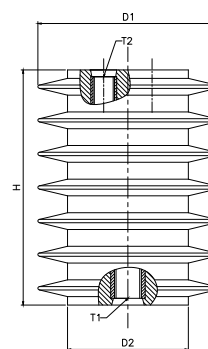
15 KV EPOXY INSULATORS



IN1041



IN1007, IN1008



IN1024

DIMENSIONAL DATA

ITEM NAME	ITEM CODE	D1	D2	H	INSERT		INSERT		INSERT	
					T1	L1	T2	L2	T3	L3
SIGB 20	IN1007	82	63	175	M20	52	M10	22	M10	22
SIGB 21	IN1008	75	52	175						
INSULATOR 132X175	IN1024	130	90	175	M20	35	M16	35	M16	35
INSULATOR 165 HT - TAPERED	IN1041	94	73	165	M20	35	M16	35	M16	35
INSULATOR 125X170	IN1071	125	95	170	M20	39	M16	35	-	-
INSULATOR 56X175	IN1113	55	38	175	M10	16	M10	16	-	-

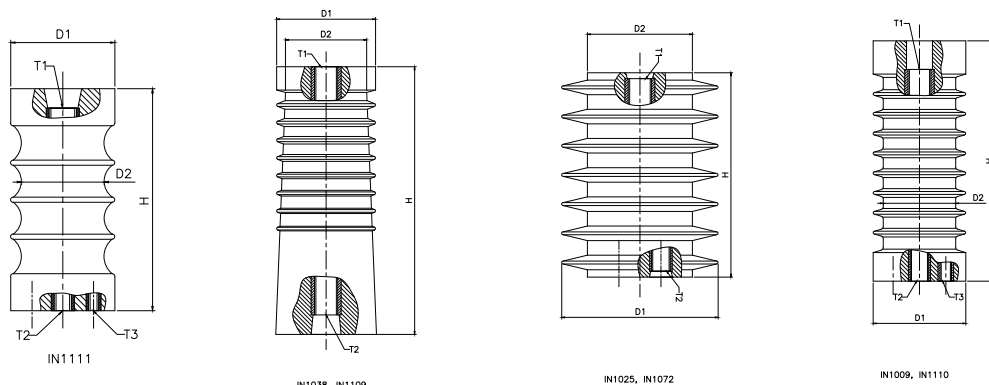
MECHANICAL CHARACTERISTICS

ITEM NAME	ITEM CODE	CREEPAGE	LOAD DISTANCE FROM THE FACE	CANTILIVER BREAKING LOAD	TENSILE WITHSTAND LOAD	COMPRESSION WITHSTAND LOAD
SIGB 20	IN1007	248	40	> 1000	> 2000	> 11000
SIGB 21	IN1008	248	40	> 1000	> 2000	> 11000
INSULATOR 132X175	IN1024	370	40	> 1600	> 2000	> 11000
INSULATOR 75/85X145	IN1041	250	40	> 1000	> 2000	> 10000
INSULATOR 125X170	IN1071	260	40	> 1000	> 2000	> 10000
INSULATOR 56X175	IN1113	238	40	> 300	> 2000	> 10000

ELECTRICAL CHARACTERISTICS

DRY POWER FREQUENCY WITHSTAND VOLTAGE	38 KV FOR 1 MINUTE
DRY FLASH OVER	> 70 KV
IMPULSE WITHSTAND VOLTAGE	105 KVP

22 KV EPOXY INSULATORS



DIMENSIONAL DATA

ITEM NAME	ITEM CODE	D1	D2	H	INSERT		INSERT		INSERT	
					T1	L1	T2	L2	T3	L3
SIGB 22	IN1009	82	63	210	M20	51	M16	40	M10	22
INSULATOR 110X230	IN1025	163	110	230	M20	32	M16	32	M16	32
A-22 70X220	IN1037	70	55.5	220	M16	35	M12	22	-	-
A-24 85X210	IN1038	85	63	210	M20	35	M16	32	-	-
Insulator 163X230	IN1072	163	110	230	M20	32	M16	32	-	-
A-25 85X230	IN1109	86	63	230	M20	45	M20	45	-	-
SIGB 26	IN1110	85	65.5	210	M20	45	M16	32	M10	22
Insulator 65X210	IN1111	65	40	210	M16	32	M10	15	M6	10

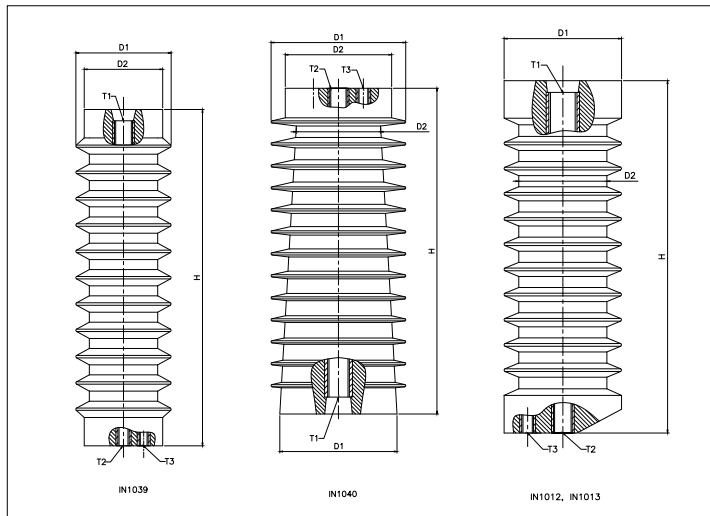
MECHANICAL CHARACTERISTICS

ITEM NAME	ITEM CODE	CREEPAGE	LOAD DISTANCE FROM THE FACE	CANTILIVER BREAKING LOAD	TENSILE WITHSTAND LOAD	COMPRESSION WITHSTAND LOAD
SIGB 22	IN1009	283	40	> 750	> 2000	> 10000
INSULATOR 110X230	IN1025	615	40	> 2000	> 5000	> 10000
A-22 70X220	IN1037	273	40	> 500	> 2000	> 10000
A-24 85X210	IN1038	290	40	> 1000	> 3000	> 10000
Insulator 163X230	IN1072	615	40	> 1600	> 2000	> 10000
A-25 85X230	IN1109	310	40	> 1000	> 2000	> 10000
SIGB 26	IN1110	335	40	> 1000	> 2000	> 10000
Insulator 65X210	IN1111	350	30	> 350	> 2000	> 10000

ELECTRICAL CHARACTERISTICS

DRY POWER FREQUENCY WITHSTAND VOLTAGE	55 KV FOR 1 MINUTE
DRY FLASH OVER	> 70 KV
IMPULSE WITHSTAND VOLTAGE	105/125 KVP

33 KV EPOXY INSULATORS



DIMENSIONAL DATA

ITEM NAME	ITEM CODE	D1	D2	H	INSERT		INSERT		INSERT	
					T1	L1	T2	L2	T3	L3
SIGC 30	IN1012	100	78	300	M20	40	M16	32	M10	20
SIGC 33	IN1013	115		330						
KEC 33KV	IN1039	85	70	300	M16	32	M10	24	M8	16
INSULATOR 124X320	IN1040	124/108	98/85	320	M20	35	M16	32	M10	20

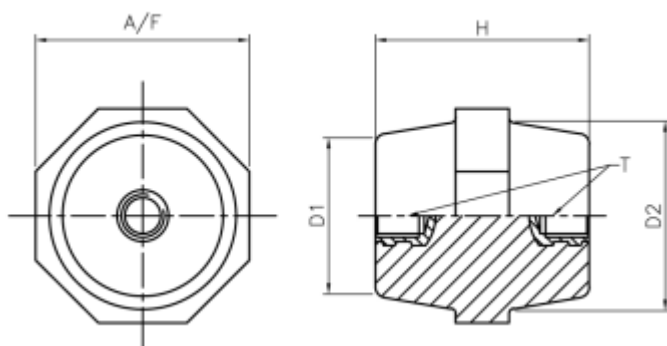
MECHANICAL CHARACTERISTICS

ITEM NAME	ITEM CODE	CREEPAGE	LOAD DISTANCE FROM THE FACE	CANTILIVER BREAKING LOAD	TENSILE WITHSTAND LOAD	COMPRESSION WITHSTAND LOAD
SIGC 30	IN1012	490	40	> 1000	> 2000	> 10000
SIGC 33	IN1013	520	40	> 1000	> 2000	> 10000
KEC 33KV	IN1039	450	40	> 1000	> 2000	> 10000
INSULATOR 124X320	IN1040	590	40	> 1000	> 2000	> 10000

ELECTRICAL CHARACTERISTICS

DRY POWER FREQUENCY WITHSTAND VOLTAGE	70 KV FOR 1 MINUTE
DRY FLASH OVER	> 100 KV
IMPULSE WITHSTAND VOLTAGE	170 KVP

OCTAGONAL INSULATOR

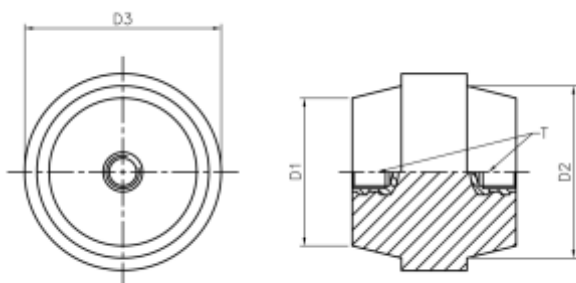


DIMENSIONAL DATA

ITEM NAME	ITEM CODE	D1	D2	H	A/F	F	INSERT		INSERT		Rated Voltage	Test Voltage (For 1 Min)
							T1	L1	T2	L2		
OCTAGONAL INSULATOR M4 X 14 HT	OCT0414	11	13	14	14	3	M4	5	M4	5	440 V	2 KV
OCTAGONAL INSULATOR M4 X 16 HT	OCT0416	13	15	16	16	4	M4	5	M4	5	440 V	2 KV
OCTAGONAL INSULATOR M5 X 18 HT	OCT0518	14	16	18	18	4	M5	7	M5	7	440 V	2 KV
OCTAGONAL INSULATOR M5 X 20 HT	OCT0520	13	16	20	19	5	M5	7	M5	7	440 V	2 KV
OCTAGONAL INSULATOR M6 X 25 HT	OCT0625	14	17	25	21	6	M6	9	M6	9	440 V	2 KV
OCTAGONAL INSULATOR M6 X 30 HT	OCT0630	21	27	30	32	8	M6	13	M6	13	440 V	2 KV
OCTAGONAL INSULATOR M8 X 35 HT	OCT0835	25	30	35	35	9	M8	13	M8	13	440 V	2 KV
OCTAGONAL INSULATOR M8 X 40 HT	OCT0740	30	35	40	40	10	M8	16	M8	16	440 V	2 KV
OCTAGONAL INSULATOR M10 X 45 HT	OCT1045	29	33	45	40	10	M10	16	M10	16	440 V	2 KV
OCTAGONAL INSULATOR M10 X 50 HT	OCT1050	32	37	50	44	10	M10	20	M10	20	440 V	2 KV
OCTAGONAL INSULATOR M12 X 55 HT	OCT1255	38	44	55	50	11	M12	18	M12	18	440 V	2 KV
OCTAGONAL INSULATOR M12 X 60 HT	OCT1260	39	45	60	55	12	M12	25	M12	25	600 V	2 KV
OCTAGONAL INSULATOR M12 X 65 HT	OCT1265	39	46	65	56	12	M12	25	M12	25	600 V	2 KV
OCTAGONAL INSULATOR M12 X 70 HT	OCT1270	42	50	70	60	13	M12	25	M12	25	600 V	2 KV
OCTAGONAL INSULATOR M12 X 75 HT	OCT1275	35	45	75	64	19	M12	25	M12	25	600 V	2 KV
OCTAGONAL INSULATOR 30 HT A/F 40	OCT103040	35	37	30	40	8	M10	12	M10	12	600 V	2 KV

* Insert sizes could also be varied to suit customer requirement

BARREL INSULATORS

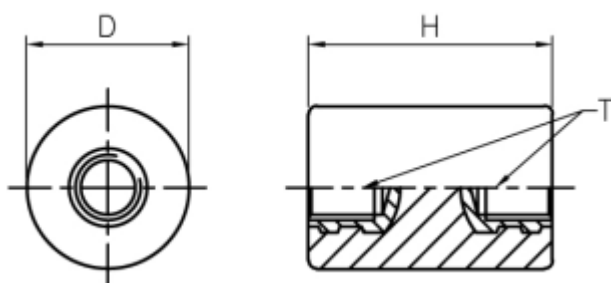


DIMENSIONAL DATA

ITEM NAME	ITEM CODE	D1	D2	D3	H	F	INSERT		INSERT		Rated Voltage	Test Voltage (For 1 Min)
							T1	L1	T2	L2		
BARREL INSULATOR M6 X 30 HT	BAR0630	30	33	37	30	8.5	M6	11	M6	11	440 V	2 KV
BARREL INSULATOR M10 X 35 HT	BAR1035	36	44	48	35	9	M10	14	M10	14	440 V	2 KV
BARREL INSULATOR M10 X 40 HT	BAR1040	36	42	48	40	16	M10	14	M10	14	440 V	2 KV
BARREL INSULATOR M10 X 45 HT	BAR1045	36	42	48	45	18	M10	16	M10	16	440 V	2 KV
BARREL INSULATOR M10 X 55 HT	BAR1055	36	42	48	55	28	M10	16	M10	16	440 V	2 KV

* Insert sizes could also be varied to suit customer requirement

CYLINDRICAL INSULATORS

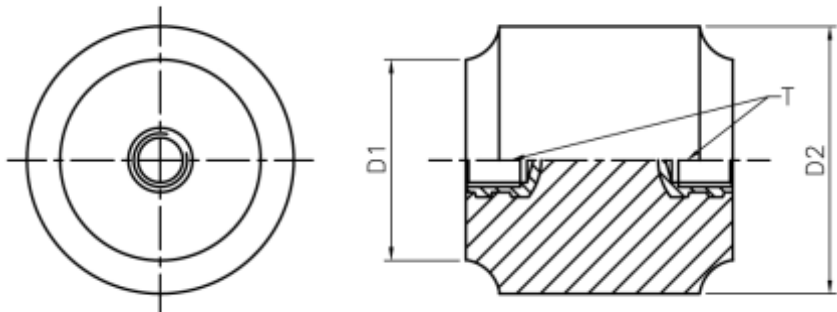


DIMENSIONAL DATA

ITEM NAME	ITEM CODE	D1	H	INSERT		INSERT		Rated Voltage	Test Voltage (For 1 Min)
				T1	L1	T2	L2		
CYLINDRICAL INSULATOR M6 X 20 HT	CYL0620	20	20	M6	7	M6	7	440 V	2 KV
CYLINDRICAL INSULATOR M6 X 25 HT	CYL0625	20	25	M6	9	M6	9	440 V	2 KV
CYLINDRICAL INSULATOR M8 X 30 HT	CYL0830	20	30	M8	12	M8	12	440 V	2 KV
CYLINDRICAL INSULATOR M10 X 50 HT	CYL1050	50	50	M10	16	M10	16	440 V	2 KV
CYLINDRICAL INSULATOR M12 X 60 HT	CYL1260	50	60	M12	25	M12	25	600 V	2 KV

* Insert sizes could also be varied to suit customer requirement

CHAMFERED ENDS CYLINDRICAL INSULATORS



DIMENSIONAL DATA										
ITEM NAME	ITEM CODE	D1	D2	H	INSERT		INSERT		Rated Voltage	Test Voltage (For 1 Min)
					T1	L1	T2	L2		
CYLINDRICAL CHAMFERED END INSULATOR M6 X 30 HT	CHF0630	22	30	30	M6	11	M6	11	440 V	2 KV
CYLINDRICAL CHAMFERED END INSULATOR M8 X 40 HT	CHF0840	30	40	40	M8	13	M8	13	440 V	2 KV
CYLINDRICAL CHAMFERED END INSULATOR M10 X 50 HT	CHF1050	40	50	50	M10	14	M10	14	440 V	2 KV
CYLINDRICAL CHAMFERED END INSULATOR M12 X 60 HT	CHF1260	40	50	60	M12	25	M12	25	600 V	2 KV
CYLINDRICAL CHAMFERED END INSULATOR M8 X 45 HT	CHF083045	24	30	45	M8	16	M8	16	440 V	2 KV
CYLINDRICAL CHAMFERED END INSULATOR M8 X 45 HT	CHF084045	34	40	45	M8	16	M8	16	440 V	2 KV
* Insert sizes could also be varied to suit customer requirement										

HEX BAND INSULATORS

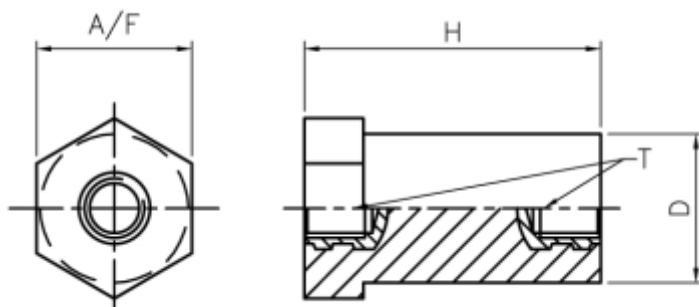


DIMENSIONAL DATA

ITEM NAME	ITEM CODE	D1	D2	H	A/F	F	INSERT		INSERT		Rated Voltage	Test Voltage (For 1 Min)
							T1	L1	T2	L2		
HEXAGONAL BAND INSULATOR M6 X 25 HT	HEX0625	16	19	25	23	11	M6	9	M6	9	440 V	2 KV
HEXAGONAL BAND INSULATOR M10 X 50 HT	HEX1050	38	44	50	48	20	M10	20	M10	20	440 V	2 KV
HEXAGONAL BAND INSULATOR M12 X 60 HT	HEX1260	37	40	60	50	20	M12	25	M12	25	600 V	2 KV
HEXAGONAL BAND INSULATOR M12 X 75 HT	HEX1275	39	43	75	49	25	M12	25	M12	25	600 V	2 KV
HEXAGONAL BAND INSULATOR M12 X 100 HT	HEX12100	37	45	100	60	28	M12	25	M12	25	600 V	2 KV
HEXAGONAL BAND INSULATOR M8 X 30 HT	HEX0830	25	27	30	31	15	M8	13	M8	13	440 V	2 KV
HEXAGONAL BAND INSULATOR M8 X 35 HT	HEX0835	25	28	35	32	15	M8	13	M8	13	440 V	2 KV

* Insert sizes could also be varied to suit customer requirement

HEX BASE INSULATORS

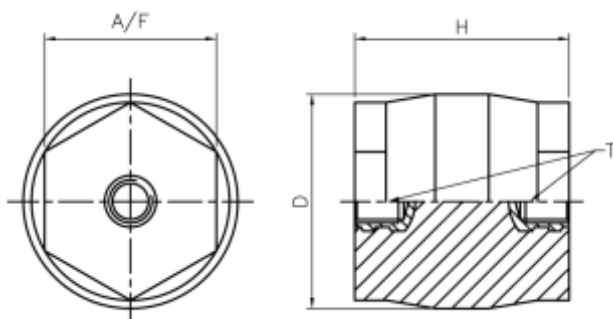


DIMENSIONAL DATA

ITEM NAME	ITEM CODE	D1	H	A/F	F	INSERT		INSERT		Rated Voltage	Test Voltage (For 1 Min)
						T1	L1	T2	L2		
HEX BASE INSULATOR M6 X 25 HT	HXB0625	20	25	21	8	M6	9	M6	9	440 V	2 KV
HEX BASE INSULATOR M6 X 30 HT	HXB0630	20	30	21	8	M6	11	M6	11	440 V	2 KV
HEX BASE INSULATOR M6 X 35 HT	HXB0635	20	35	21	8	M6	11	M6	11	440 V	2 KV
HEX BASE INSULATOR M6 X 40 HT	HXB0640	20	40	21	8	M6	13	M6	13	440 V	2 KV
HEX BASE INSULATOR M6 X 50 HT	HXB0650	20	50	21	8	M6	13	M6	13	440 V	2 KV
HEX BASE INSULATOR M6 X 40 HT	HXB0660	40	40	41	8	M6	13	M6	13	440 V	2 KV

* Insert sizes could also be varied to suit customer requirement

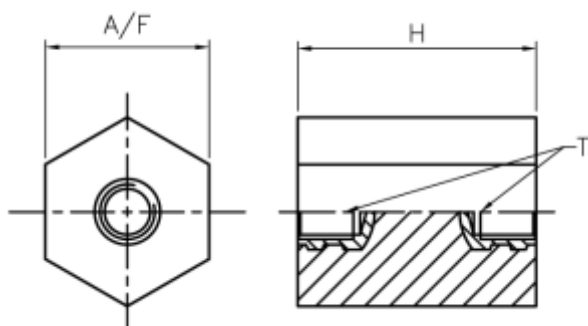
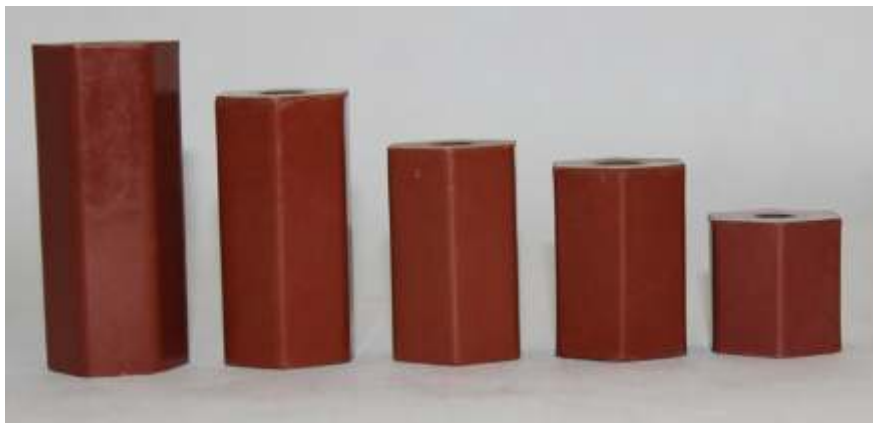
DOUBLE HEX INSULATORS



DIMENSIONAL DATA

ITEM NAME	ITEM CODE	D1	H	A/F	F	INSERT		INSERT		Rated Voltage	Test Voltage (For 1 Min)
						T1	L1	T2	L2		
DOUBLE HEX BAND INSULATOR M10 X 30 HT	DHX1030	30	30	24	10	M10	13	M10	13	440 V	2 KV
DOUBLE HEX BAND INSULATOR M10 X 40 HT	DHX1040	40	40	32	10	M10	16	M10	16	440 V	2 KV
DOUBLE HEX BAND INSULATOR M10 X 50 HT	DHX1050	40	50	32	10	M10	20	M10	20	440 V	2 KV
* Insert sizes could also be varied to suit customer requirement											

FULLY HEX INSULATORS

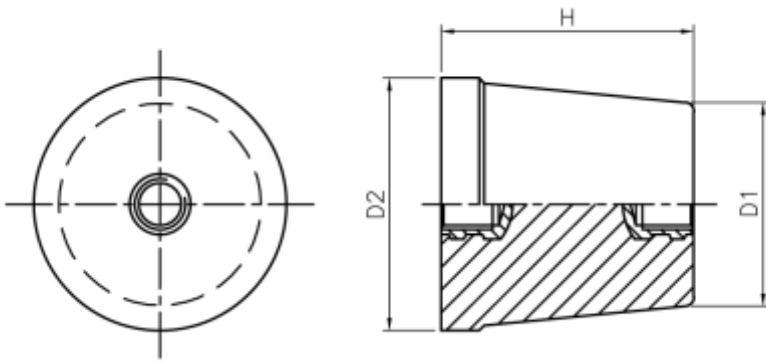


DIMENSIONAL DATA

ITEM NAME	ITEM CODE	H	A/F	INSERT		INSERT		Rated Voltage	Test Voltage (For 1 Min)
				T1	L1	T2	L2		
FULL HEX INSULATOR M8 X 25 HT	FHX0825	25	24	M8	10	M8	10	440 V	2 KV
FULL HEX INSULATOR M8 X 35 HT	FHX0835	35	24	M8	10	M8	10	440 V	2 KV
FULL HEX INSULATOR M8 X 50 HT	FHX0850	50	24	M8	16	M8	16	440 V	2 KV
FULL HEX INSULATOR M8 X 60 HT	FHX0860	60	24	M8	16	M8	16	600 V	2 KV

* Insert sizes could also be varied to suit customer requirement

CONICAL INSULATORS

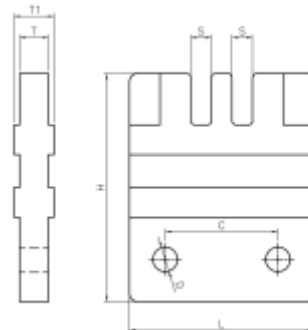
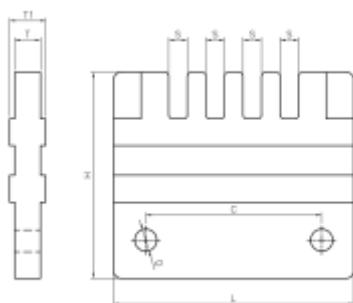
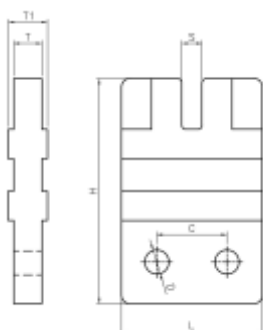
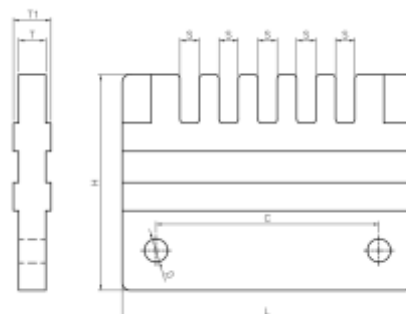


DIMENSIONAL DATA

ITEM NAME	ITEM CODE	D1	D2	H	F	INSERT		INSERT		Rated Voltage	Test Voltage (For 1 Min)
						T1	L1	T2	L2		
CONICAL INSULATOR M5 X 20 HT	CON0520	15	24	20	3	M6	7	M6	7	440 V	2 KV
CONICAL INSULATOR M6 X 25 HT	CON0625	18	25	25	5	M6	7	M6	7	440 V	2 KV
CONICAL INSULATOR M6 X 30 HT	CON0630	20	30	30	6	M6	10	M6	10	440 V	2 KV
CONICAL INSULATOR M8 X 35 HT	CON0835	21	32	35	4	M8	11	M8	11	440 V	2 KV
CONICAL INSULATOR M8 X 40 HT	CON0840	32	40	40	6	M8	16	M8	16	440 V	2 KV
CONICAL INSULATOR M10 X 45 HT	CON1045	30	45	45	5	M10	16	M10	16	440 V	2 KV
CONICAL INSULATOR M10 X 50 HT	CON1050	38	50	50	10	M10	20	M10	20	440 V	2 KV
CONICAL INSULATOR M10 X 55 HT	CON1055	33	50	55	5	M10	20	M10	20	440 V	2 KV
CONICAL INSULATOR M12 X 60 HT	CON1260	39	50	60	10	M12	25	M12	25	600 V	2 KV
CONICAL INSULATOR M12 X 70 HT	CON1270	38	50	70	10	M12	25	M12	25	600 V	2 KV

* Insert sizes could also be varied to suit customer requirement

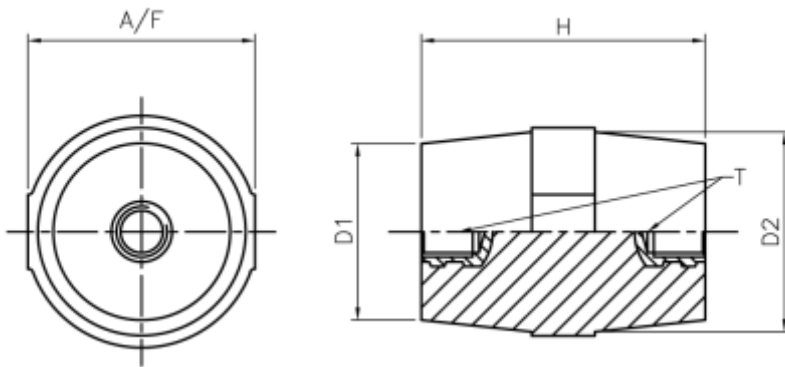
FINGER TYPE BUSBAR SUPPORTS



DIMENSIONAL DATA

ITEM NAME	ITEM CODE	L	H	T	T1	S	D	C	Rated Voltage	Test Voltage (For 1 Min)
FINGER TYPE L.T. BUSBAR SUPPORT	BBS85001	50	66	9	13	7.2	8.5	26	440 V	2 KV
FINGER TYPE L.T. BUSBAR SUPPORT	BBS85101	50	66	9	13	11	8.5	26	440 V	2 KV
FINGER TYPE L.T. BUSBAR SUPPORT	BBS85121	50	66	9	13	13.7	8.5	26	440 V	2 KV
FINGER TYPE L.T. BUSBAR SUPPORT	BBS14106	50	70	10	14	7.2	8.5	22.5	440 V	2 KV
FINGER TYPE L.T. BUSBAR SUPPORT	BBS14110	50	70	10	14	11	8.5	22.5	440 V	2 KV
FINGER TYPE L.T. BUSBAR SUPPORT	BBS14112	50	70	10	14	13.7	8.5	22.5	440 V	2 KV
FINGER TYPE L.T. BUSBAR SUPPORT	BBS20103	70	70	15	20	7.2	8.5	40	440 V	2 KV
FINGER TYPE L.T. BUSBAR SUPPORT	BBS20110	70	70	15	20	11	8.5	40	440 V	2 KV
FINGER TYPE L.T. BUSBAR SUPPORT	BBS20112	70	70	15	20	13.7	8.5	40	440 V	2 KV
FINGER TYPE L.T. BUSBAR SUPPORT	BBS85002	60	67	8	12	7	8.5	32	440 V	2 KV
FINGER TYPE L.T. BUSBAR SUPPORT	BBS85102	80	70	12	16	10.5	10	50	440 V	2 KV
FINGER TYPE L.T. BUSBAR SUPPORT	BBS85122	80	70	12	16	13	10	50	440 V	2 KV
FINGER TYPE L.T. BUSBAR SUPPORT	BBS14206	60	70	10	14	7.2	8.5	32	440 V	2 KV
FINGER TYPE L.T. BUSBAR SUPPORT	BBS14210	60	70	10	14	11	8.5	32	440 V	2 KV
FINGER TYPE L.T. BUSBAR SUPPORT	BBS14212	60	70	10	14	13.7	8.5	32	440 V	2 KV
FINGER TYPE L.T. BUSBAR SUPPORT	BBS20106	70	70	15	20	7.2	8.5	40	440 V	2 KV
FINGER TYPE L.T. BUSBAR SUPPORT	BBS20210	70	70	15	20	11	8.5	40	440 V	2 KV
FINGER TYPE L.T. BUSBAR SUPPORT	BBS20212	70	70	15	20	13.7	8.5	40	440 V	2 KV
FINGER TYPE L.T. BUSBAR SUPPORT	BBS85003	80	70	8	12	7	10	50	440 V	2 KV
FINGER TYPE L.T. BUSBAR SUPPORT	BBS85103	140	80	13	17	10.5	8	100	440 V	2 KV
FINGER TYPE L.T. BUSBAR SUPPORT	BBS85123	140	80	13	17	13.7	8	100	440 V	2 KV
FINGER TYPE L.T. BUSBAR SUPPORT	BBS85004	80	70	8	12	7	10	50	440 V	2 KV
FINGER TYPE L.T. BUSBAR SUPPORT	BBS85104	140	80	13	17	10.5	8	100	440 V	2 KV
FINGER TYPE L.T. BUSBAR SUPPORT	BBS85124	140	80	13	17	13.7	8	100	440 V	2 KV

SPANNER HOLD INSULATORS

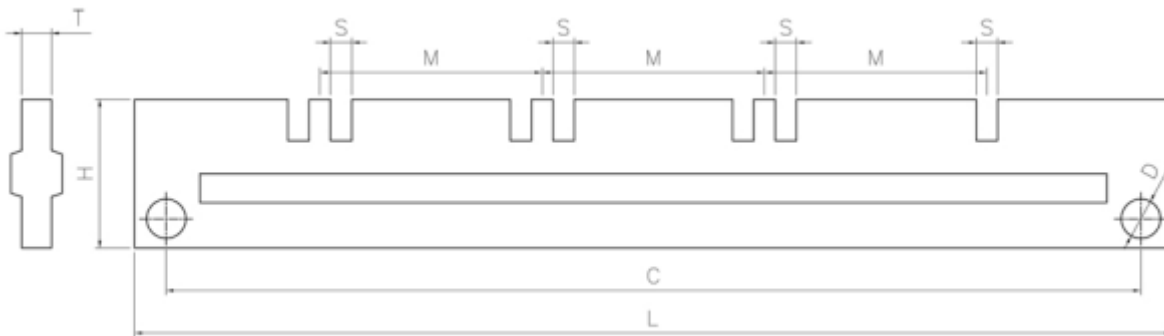
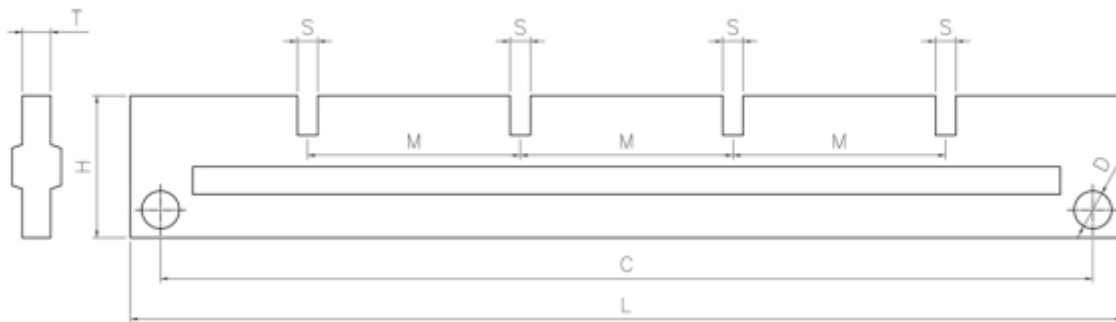


DIMENSIONAL DATA

ITEM NAME	ITEM CODE	D1	D2	H	A/F	INSERT		INSERT		Rated Voltage	Test Voltage (For 1 Min)
						T1	L1	T2	L2		
SPANNER HOLD INSULATOR M8 X 35 HT	SPH0835			35		M8	12	M8	12	440 V	2 KV
SPANNER HOLD INSULATOR M8 X 40 HT	SPH0840			40		M8	12	M8	12	440 V	2 KV
SPANNER HOLD INSULATOR M8 X 45 HT	SPH0845	28	33	45	36	M8	16	M8	16	440 V	2 KV
SPANNER HOLD INSULATOR M10 X 51 HT	SPH1051	28	32	51	37	M10	16	M10	16	440 V	2 KV
SPANNER HOLD INSULATOR M12 X 76 HT	SPH1276	34	42	76	50	M12	25	M12	25	600 V	2 KV

* Insert sizes could also be varied to suit customer requirement

TRIPPLE POLE SUPPORT



DIMENSIONAL DATA

ITEM NAME	ITEM CODE	L	H	T	S	D	C	M	Rated Voltage	Test Voltage (For 1 Min)
TPN BUSBAR SUPPORT	TPN107/35	350	50	10	7.2	8.5	326	75	440 V	2 KV
TPN BUSBAR SUPPORT	TPN111/35	350	50	10	11	8.5	326	75	440 V	2 KV
TPN BUSBAR SUPPORT	TPN114/35	350	50	10	13.7	8.5	326	75	440 V	2 KV
TPN BUSBAR SUPPORT	TPN107/42	420	60	10	7.2	8.5	396	100	440 V	2 KV
TPN BUSBAR SUPPORT	TPN111/42	420	60	10	11	8.5	396	100	440 V	2 KV
TPN BUSBAR SUPPORT	TPN114/42	420	60	10	13.7	8.5	396	100	440 V	2 KV
TPN BUSBAR SUPPORT	TPN207/35	350	50	10	7.2	8.5	326	70	440 V	2 KV
TPN BUSBAR SUPPORT	TPN211/35	350	50	10	11	8.5	326	70	440 V	2 KV
TPN BUSBAR SUPPORT	TPN214/35	350	50	10	13.7	8.5	326	70	440 V	2 KV
TPN BUSBAR SUPPORT	TPN207/42	420	60	10	7.2	8.5	396	100	440 V	2 KV
TPN BUSBAR SUPPORT	TPN211/42	420	60	10	11	8.5	396	100	440 V	2 KV
TPN BUSBAR SUPPORT	TPN214/42	420	60	10	13.7	8.5	396	100	440 V	2 KV